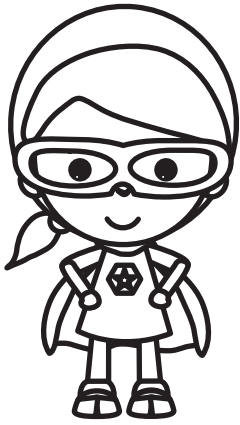


Halloween Dress Ups

Who are they? Write numbers in the table to match the pictures to their descriptions.



1. *Sūpāhiiro*



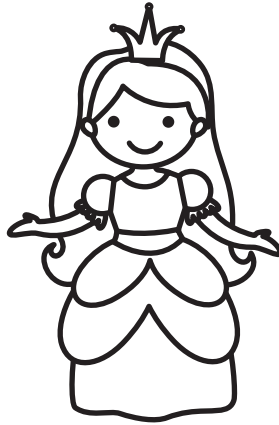
2. *Kakashi*



3. *Kaizoku*



4. *Raion*



5. *Ohime-san*



6. *Gaikotsu*

<input type="checkbox"/> <i>Boku wa urusai desu. Kiiro desu. Okii desu.</i>	<input type="checkbox"/> <i>Watashi no doresu wa pinku desu. Purinsu ga suki desu.</i>
<input type="checkbox"/> <i>Watashi wa hayai desu. Sora ga suki desu.</i>	<input type="checkbox"/> <i>Boku wa kuro to shiro desu. Boku wa yowai desu.</i>
<input type="checkbox"/> <i>Boku wa tsuyoi desu. Kuro ga suki desu. Fune ga suki desu.</i>	<input type="checkbox"/> <i>Boku wa karasu ga suki jyanai desu. Boku wa niwa ga suki desu.</i>

hayai = fast yowai = weak tsuyoi = strong urusai = noisy