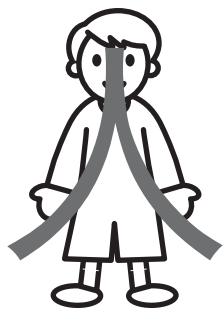


Counting People

Answer the questions below.



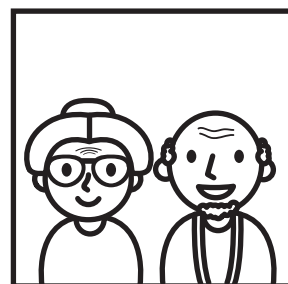
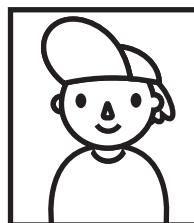
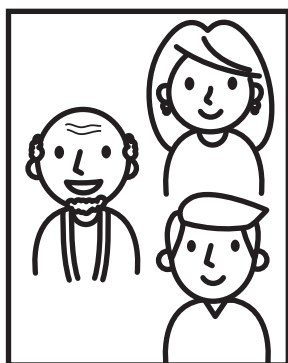
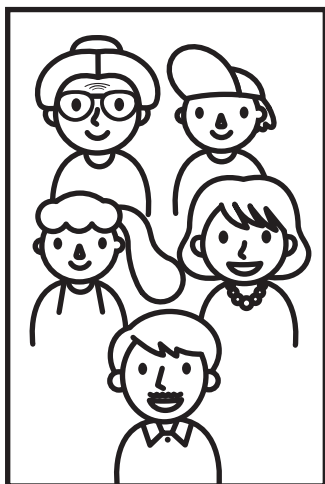
nin = person

hito

Japanese have different counters for counting different things. The counter for people is -nin. This means the number plus nin is used to count people. If there are one or two people, nin is not used.

- | | |
|------------|--------------|
| 1. hitori | 6. roku-nin |
| 2. futari | 7. nana-nin |
| 3. san-nin | 8. hachi-nin |
| 4. yo-nin | 9. kyu-nin |
| 5. go-nin | 10. jyu-nin |

1. Count the pictures and write how many people in Japanese.



2. How many people around you? Write in Japanese.